



Wallis Avenue , Maidstone ME15 9JT

- For Sale By Modern Method Of Auction
 - Large Lounge/Diner
 - Popular Parkwood Location
 - Cash Buyers Only
- Two Double Bedrooms
- Communal Gardens
- Close To Amenities
- No Onward Chain

By Auction £80,000 Leasehold

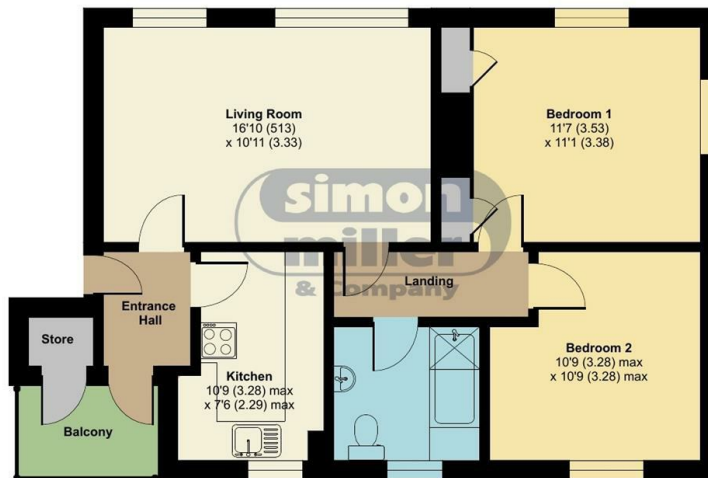


Local Authority
Council Tax Band A
EPC Rating D

Wallis Avenue, Maidstone, ME15

Approximate Area = 660 sq ft / 61.3 sq m (excludes store)

For identification only - Not to scale



FIRST FLOOR



Floor plan produced in accordance with RICS Property Measurement Standards incorporating International Property Measurement Standards (IPMS2 Residential). © nichecom 2023. Produced for Simon Miller & Company. REF: 959808

Maidstone & The Weald Office

11 Colman House, Colman Parade, King
Street, Maidstone, Kent, ME14 1DJ

Contact

01622 691255
maidstonesales@simonmiller.co.uk

Agents Note: Whilst every care has been taken to prepare these particulars, they are for guidance purposes only. All measurements are approximate and for general guidance purposes only and whilst every care has been taken to ensure accuracy, they should not be relied upon and potential buyers/tenants are advised to recheck the measurements.

